

# WHITEWATER VALLEY REMC Powerlines

A MONTHLY PUBLICATION FOR THE MEMBERS OF WHITEWATER VALLEY REMC

## Comments from your CEO



Boyd Huff, CEO

## Discover the Value of Co-op Membership!

### Co-op Connections Card® Introduced

Do you need a rental car? Or perhaps you are

planning a cruise, or just taking your family to dinner at the local diner, our new Co-op Connections Card will save you money. Because you are a member of Whitewater Valley REMC, a Touchstone Energy Cooperative, you will receive discounts on products and services from participating and national businesses, and over 48,000 pharmacies. This is just one more way you benefit from being a cooperative member.

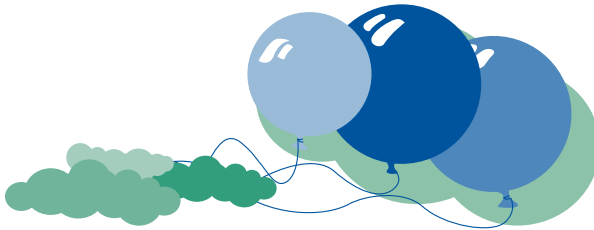
The program is simple and free to all Whitewater Valley REMC members.

Your new Co-op Connections Card will be mailed to you on or about June 23rd.

Simply watch for Co-op Connections display signs at local businesses and search online by category. Over 100 local and national retailers are participating, ranging from automotive, entertainment and fitness, to travel, healthcare, and technology. Present your card when you place an order or make a purchase and the discount is yours.

For more information, call us at (765) 458-5171 or (800) 529-5557 or visit our website at [www.wvwremc.com](http://www.wvwremc.com).

## Join Us at the Fair



Whitwater Valley REMC will have a booth at the Wayne County Fair June 21-28 and at the Franklin County Fair July 12-19.

Stop by our booth and talk to cooperative employees and directors. Bring this coupon and get a free gift (while supplies last)!

## WVREMC Powerlines Coupon

Name: \_\_\_\_\_

Account No.: \_\_\_\_\_

Phone: (\_\_\_\_) \_\_\_\_\_

Bring this coupon to the REMC booth during the Wayne or Franklin County Fair and receive a free gift!

A Touchstone Energy® Cooperative

### IN THIS ISSUE

CFLs & Mercury.....	p 2
Dale Walther Elected Hoosier Energy Vice Chairman .....	p 2
REMC Holds 15th Annual Meeting .....	p 3
2008 Annual Meeting Prize Winners.....	p 3
Election Results.....	p 3
Employee News.....	p 4

### Liberty Office Hours:

7:30 a.m. to 4:30 p.m. Monday through Friday  
Closed Saturdays, Sundays and Holidays

### To Report an Outage or Emergency:

• Call 765.458.5171 or 1.800.529.5557  
24 hours a day, 7 days a week

Be ready to provide the following information:

- The name and account number under which your electric service is listed
- Map location number
- Your phone number—needed to call back or confirm power restoration
- The type of problem you are experiencing —flickering lights, complete power outage, etc.

We appreciate your call and will work promptly to assist you.



WHITEWATER VALLEY  
RURAL ELECTRIC MEMBERSHIP CORPORATION

101 Brownsville Avenue  
P.O. Box 349  
Liberty, IN 47353  
Phone: 765.458.5171  
1.800.529.5557  
E-mail: [info@wvwremc.com](mailto:info@wvwremc.com)

President & CEO - Boyd Huff  
Powerlines Editor - Sandy Cason

For up-to-date information, visit us on the web at [www.wvwremc.com](http://www.wvwremc.com).

# CFLs & Mercury

## Answers to Frequently Asked Questions

### Why do CFLs contain mercury?

Mercury is an essential ingredient for most energy efficient lighting products, including CFLs. It is the mercury that excites phosphors in a CFL, causing them to glow and give light. When electric current passes through mercury vapor, the mercury emits ultraviolet energy. When this ultraviolet energy passes through the phosphor coating, it produces light very efficiently. Because mercury is consumed during lamp operation, a certain amount is necessary to produce light and achieve long lamp life.

### How much mercury does one CFL contain?

The amount of mercury in a CFL's glass tubing is small, about 4 mg.

### Since CFLs contain mercury, how can they still be good for the environment?

CFLs are responsible for less mercury than standard incandescent light bulbs, and actually work to prevent mercury from entering the air, where it most affects our health. The highest source of mercury in our air comes from burning fossil fuels such as coal, the most common fuel used in the U.S. to produce electricity. A CFL uses 75% less energy than an incandescent light bulb and lasts up to 13 times longer.

“Because mercury is consumed during lamp operation, a certain amount is necessary to produce light and achieve long lamp life.”



70% of power plants are coal fired and thus burn fossil fuel to produce energy. These power plants will emit 10 mg

of mercury to produce the electricity to run an incandescent bulb compared to only 2.4 mg of mercury to run a CFL for the same time. Coal-fired power generation accounts for roughly 40% of the mercury emissions in the U.S.

### Should I be concerned about using CFLs in my home?

CFLs are safe to use in your home. No mercury is released when the bulbs are in use and they pose no danger to you or your family when used properly.

### How do I safely dispose of a CFL when it burns out?

Fortunately, Whitewater Valley REMC is an authorized drop-off center for burned out CFL bulbs. Just bring the bulb to the office and put it in the recycle bucket. Or, go to

“CFLs are safe to use in your home.”

earth911.org to see if a recycling center close to you accepts CFL bulbs. If so, take the bulb there. If you cannot bring your bulb to the REMC, or if there's no recycling center close by, seal the bulb in two plastic bags and place in regular trash disposal.

### What should I do if I break a CFL?

Open nearby windows to disperse any vapor that may escape, carefully sweep up the fragments (do not use your hands) and wipe the area with a disposable paper towel to remove all glass fragments. Do not use a vacuum. Place all fragments in a sealed plastic bag and follow disposal instructions.

NOTE: Whitewater Valley REMC's recycle program cannot accept broken bulbs.

[The Hidden Account number is 822704]

## For Your Information

### OUTAGES BY CAUSE

January - March - 2008



Cause	# Outages	%
Major Storm	309	56.39
Trees	47	8.58
Unknown	31	5.66
Equipment	30	5.47
Decay/Corrosion	27	4.93
Fuses Pulled in 2	20	3.65
Power Supplier	17	3.10
Vehicles	14	2.55
Fuse Holder Burned	12	2.19
Member	12	2.19
Animals	9	1.64
Construction	9	1.64
Lightning	6	1.09
Weather	5	0.91
<b>Total</b>	<b>548</b>	<b>100</b>

## Dale Walther Elected Hoosier Energy Vice Chairman



(April 14, 2008)—Dale Walther, a member of the Whitewater Valley REMC Board of Directors, has been elected vice chairman of Hoosier Energy Rural Electric Cooperative's Board of Directors.

*(Dale Walther Elected continued)*

Walther has represented Whitewater Valley REMC on the Hoosier Energy Board of Directors since April 1996. He has been a director on the Whitewater Valley REMC Board for 22 years.

Walther was elected as Hoosier Energy vice chairman during the power supply cooperative's 2008 Annual Meeting April 9 at the French Lick Springs Resort Hotel. He previously served as treasurer and secretary of the power supply cooperative board.

“**Hoosier Energy owns and maintains more than 1,400 miles of transmission lines and 300 distribution substations and delivery points.**”

Hoosier Energy is the generation and transmission cooperative providing electric power to Whitewater Valley REMC and 16 other distribution cooperatives in central and southern Indiana and one cooperative in Illinois. Hoosier Energy is headquartered in Bloomington and operates four generating facilities: the 1,016-megawatt Merom Station

in Sullivan County; the 250-megawatt Ratts Station in Pike County; the 258-megawatt Lawrence Station in Lawrence County, and the 174-megawatt Worthington Station in Greene County. The co-op also operates a renewable energy generating facility in Clark County.

Hoosier Energy owns and maintains more than 1,400 miles of transmission lines and 300 distribution substations and delivery points. Member electric cooperatives serve the electric needs of more than 800,000 residents, businesses, industries and farms in 48 central and southern Indiana counties.

Walther operates a cattle and grain farm in Wayne County. He has served on the boards of the Federal Land Bank, the Union County Bank, Wayne County 4-H and Cattleman's Association, and is a Farm Bureau member. He is a member of the Centerville Christian Church.

Whitewater Valley REMC, headquartered in Liberty, operates and maintains more than 1,700 miles of distribution line in providing electricity to 12,000 consumers in Wayne, Randolph, Union, Fayette, Franklin and Dearborn counties. ●

## REMC Holds 15th Annual Meeting

On Thursday, April 3rd a record crowd of over 700 people, including REMC members, their families and guests, were on hand to take part in Whitewater Valley REMC's 15th Annual Meeting. The meeting, held at the Centerville High School, was called to order at 7:00 p.m. by Myron Moyer, Chairman of the Board.

During the business session, Boyd Huff, President and CEO, introduced a video which gave a summary of the past year's accomplishments. After the video, Huff gave an update on operations. He also reported on current legislative issues affecting cooperatives and all utilities.

Robert Mersch was recognized for representing the cooperative in the 2008 Electric Youth Tour (in Washington D.C.) and six employees were recognized for their years of service: Adam Carmen (5 years), Brian Cheatham (5 years), Lisa Poe (10 years), Mark Bell (10 years), Rick Stanton (30 years), and Brownlow Townsend (35 years).

Kevin Smith, President of Whitewater Valley REMC Community Trust, Inc. gave an update on Operation Round Up.

All incumbents for Whitewater Valley REMC Board of Director positions were re-elected. They were Sharon Howell, North District, Dale Walther and Jodie Creek, Central District, and Mark Singer, South District. Incumbents, Duane Cates, North District, and Robert Wagner, South District, were re-elected for Nominating Committee Member positions. Sherri Gettinger was newly elected to the Nominating Committee for the Central District.

Other highlights of the meeting included musical entertainment by The Grimes Girls and a Kid's Program. After a brief question and answer session, prizes were awarded and the meeting adjourned around 8:15 p.m. ●

## 2008 Annual Meeting Prize Winners

### *John Deere Mower*

Mrs. Rodney Jones, Hagerstown

### *\$500 Cash*

Nelson Steele, Liberty

### *\$250 Cash*

June Nocton, Richmond

### *\$100 Bill Credits*

Patti Stovall, Richmond; Charles E. Warner, Centerville; Chris Mullins, Centerville; Steven Thau, Brownsville; David Rusk, Centerville

### *\$50 Bill Credits*

Paul Ridenour, Connersville; Edward Oliphant, Hagerstown; House of Jesus, Inc., Winchester; Wallace R. Bales, Williamsburg; Elmer Chaney, Liberty

### *\$50 Cash Early Bird*

Merrimen Bentz, Modoc; Walter Evans, Centerville; Martin Guy, Greens Fork

### **Kid's Program**

#### *Girl's Bike*

Karissa Evans, Brookville

#### *Boy's Bike*

Jeremy Mersch, Brookville

### Election Results

Director	District
Sharon Howell	North
Dale Walther	Central
Jodie Creek (2-year term)	Central
Mark Singer	South
Nominating Committee	District
Duane Cates	North
Sherri Gettinger	Central
Robert Wagner	South

## Employee News

Derrick Mullins joined the REMC March 3rd as a lineman apprentice. He is a graduate of Centerville High School. Previously, Derrick worked at the family-owned business, Mullins Plumbing. Derrick and his wife Shannon have two children. Madison is ten and Hunter is four. In his spare time, Derrick enjoys deer hunting, fishing, and horseback riding.



**Derrick Mullins**

Clay Smith also joined the REMC March 3rd as a lineman apprentice. He is a graduate of

Connersville High School and was previously employed as a delivery driver for Pepsi. Clay enjoys truck pulls, deer hunting, and fishing.



**Clay Smith**

Both men logged many on-the-job training hours during their first week at the cooperative. It was the same week in which an ice storm downed trees, poles, and power lines and left 3,000 members without power in Randolph and Wayne Counties.

Derrick and Clay are enrolled in the Hoosier Energy Apprenticeship Training and Safety (HEATS) program. The HEATS program

consists of 576 hours of classroom instruction and 8,000 hours of on-the-job training. Line apprentices who successfully complete the indentured program are certified as journeyman line specialists by Hoosier Energy, the International Brotherhood of Electrical Workers, and the Department of Labor.

The staff and employees of Whitewater Valley REMC want to welcome Derrick and Clay. •



### Find the Hidden Account Number!

No one has found the hidden account number from May. Keep reading your *Powerlines* each month or browsing our website—the next hidden account number could be yours!

### June Due Dates

During June the due dates for payment of your electric bills are June 3, 10, 19 and 26.

Remember, we recommend that you allow three to five business days for the mail to reach the payment processing center. That way, you'll never run the risk of being late.

### Payment Options

**US Mail:** *Send your payment to:*  
Whitewater Valley REMC  
P.O. Box 3199  
Martinsville, IN 46151-3168

**Internet:** *Log-on at* [www.wvwremc.com](http://www.wvwremc.com)

**Liberty Office:** *In person or in the drop box*

**Automatic Withdrawal:** *Simply request a form and submit it to our office*

**FCN or Franklin County**

**National Bank:**

*In person or in the drop box*

*(Please bring your payment stub with you)*

**United Communities National Bank**

**Richmond Branch:** *In person or in the drop box (Please bring your payment stub with you)*

*If you would like more information about payment options, call 765-458-5171 or 1-800-529-5557.*

## Your Small Change Can Change Lives

Whitewater Valley REMC members can easily make a big difference in someone's life by making a small contribution to Operation Round-Up®. The contribution goes into the Whitewater Valley REMC Community Trust, Inc. Fund. When you sign-up, Whitewater Valley REMC will automatically 'round-up' your monthly electric bill to help organizations within the cooperative service territory. Four times a year, the board meets to disperse funds. Grants are awarded for a variety of worthwhile community service projects, education and youth programs. The program is yours as a member of Whitewater Valley REMC. We just provide the vehicle for organizing the effort.

### Give to Operation Round-Up®



**Yes! Sign me Up**



Name: \_\_\_\_\_

Address: \_\_\_\_\_

Phone Number: \_\_\_\_\_

Account Number: \_\_\_\_\_

**Call: 765-748-5171**

**Fax: 765-458-5938**

**Mail:**

**PO Box 349**

**Liberty, IN 47353**

It's easy to support the Whitewater Valley Operation Round-Up program by just "rounding up" your bill to the next full dollar amount. The average donation is about 50 cents per month, or about \$6 per year, and is tax deductible. Together with other members who support this program, your pennies can really make a difference in the lives of people in the Whitewater Valley REMC service territory.