

WHITEWATER VALLEY REMC Powerlines

A MONTHLY PUBLICATION FOR THE MEMBERS OF WHITEWATER VALLEY REMC

Comments from your CEO

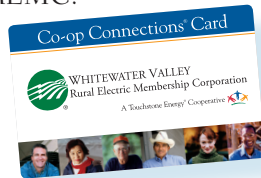


Boyd Huff, CEO

Save Using Your Co-op Connections Card

Don't forget to use your Whitewater Valley REMC Co-op Connections® card. This card is free and another benefit of being a member of Whitewater Valley REMC.

Check out all the discounts by visiting our web site at www.wvvremc.com.



If you don't have internet access or lost your card, call us at 765-458-5171 and we will send you a listing of all discounts or a new card. We now have over 100 local businesses participating! If you are a business owner or manager and would like to offer a discount to our members call us for more information. Remember you can use your card to save at the pharmacy, too!

Keeping Power Flowing

Co-op lineworkers maintain an intricate system of power lines around the clock

We often take electricity for granted. It makes our homes comfortable day-in and day-out, and it's at the ready with little more than the flip of a switch.

But what goes on behind the scenes once that switch is thrown is far more complex. The power grid, which can be described as the largest, most complex machine ever built, involves an intricate network of power lines crisscrossing neighborhoods and open country, over mountains and through cities, which has evolved over the last century to supply consumers with safe, reliable, and affordable electricity.

The tricky thing about electricity is that it must be used, or moved to where it can be used, the second it's produced; it generally can't be stored like water or gas. What's more, electricity moves at the speed of light along the path of least resistance. This basic principle calls for a carefully monitored, intricate system to move it 24 hours a day.



Electric cooperatives own and maintain roughly 65,000 miles, or 6 percent, of the nation's transmission lines and 2.5 million miles, or 42 percent, of its distribution lines. Source: Lawrence Berkeley National Laboratory

Literally millions of miles of power lines span the United States in a complex series of "highways." These lines can be broken into two main categories: transmission, the high-voltage "interstates" supported by steel towers and other similar structures that move electricity over vast distances; and distribution, the "local roads" that run through small towns

Continued on page 4 >

A Touchstone Energy® Cooperative

IN THIS ISSUE

- Keeping Power Flowing p 1, 4
- Outages by Cause p 2
- Summer Seasonal Rates Begin This Month p 2
- Join us at the Fair p 2
- June CFL Winners p 3
- Whitewater Valley REMC 17th Annual Meeting of the Members . . . p 3
- 2010 Election Results p 3

For up-to-date information, visit us on the web at www.wvvremc.com

Liberty Office Hours:

7:30 a.m. to 4:30 p.m. Monday through Friday
Closed Saturdays, Sundays and Holidays

To Report an Outage or Emergency:

Call 1-800-776-0493

24 hours a day, 7 days a week

Be ready to provide the following information:

- The name and account number under which your electric service is listed
- Map location number
- Your phone number—needed to call back or confirm power restoration
- The type of problem you are experiencing—flickering lights, complete power outage, etc.

We appreciate your call and will work promptly to assist you.



WHITEWATER VALLEY
RURAL ELECTRIC MEMBERSHIP CORPORATION

101 Brownsville Avenue
P.O. Box 349
Liberty, IN 47353
Phone: 765.458.5171
1.800.529.5557
E-mail: info@wvvremc.com

For up-to-date information, visit us on the web at www.wvvremc.com.

President & CEO - Boyd Huff
Powerlines Editor - Sandy Cason

For Your Information OUTAGES BY CAUSE

March 2010



Cause	Outages	
	#	%
Decay/Corrosion	12	24.0
Equipment	11	22.0
Animals	10	20.0
Member	5	10.0
Construction/Maint	4	8.0
Lightning	2	4.0
Trees	2	4.0
Unknown	2	4.0
Vehicles	1	2.0
Power Supplier	1	2.0
Total	50	100

Summer Seasonal Rates Begin This Month

What are Seasonal Rates and Why Should I Care?

Now that the Summer Seasonal Rates are in effect, and the annual meeting presentations are over and letters to members have been sent, we thought we'd step back and provide more information.

What is the Summer Season?

The Summer Season is June, July and August. This means you are billed at the Summer Season rate for bills received in June, July and August. The Residential Purchased Power Summer Rate is \$0.09944 per kWh. When added to the Distribution Delivery charge of \$0.01943 the total kWh charge is \$0.11887 for the Summer Season.

What does it mean to me?

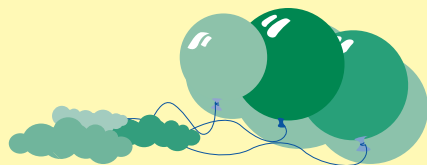
On average, an annual increase of \$120. But if you can find ways to be more energy efficient – use less kWhs in June, July and August, your actual increase may be less because you made the effort to use less energy. The bottom line is the less energy you use

during the Summer Season the less impact the Seasonal Rates will have on your budget.

Are Seasonal Rates the same as Time of Use Rates?

No. Seasonal Rates are the approved rates by the Board of Directors and all members except Industrial Power are now on a Seasonal Rate. The Seasonal Rates are Summer – June, July and August, Winter - December, January and February, and Shoulder - March, April, May, September, October and November.

Time of Use Rates are voluntary and have times designated as on-peak and off-peak with pricing for each. Members will want to change their usage patterns to avoid paying as much on-peak pricing as possible and take advantage of the lower off-peak pricing to see any benefits of switching to the Time of Use Rate. Again, this is voluntary and no member will be put on Time of Use without their consent. Time of Use Rates will be available to residential customers later this year.



Join us at the Fair

Whitewater Valley REMC will have a booth at the Wayne County Fair June 19-26 and at the Franklin County Fair July 10-17. Stop by our booth and talk to cooperative employees and directors. Bring this coupon and get a free gift (while supplies last)!

Name: _____

Account No.: _____

Phone: _____



June CFL Winners

Congratulations to the following members! They each won a complete home CFL package from the cooperative.

June winners are:

Patricia Adams, Metamora
Jarrod Hokey, Milton
Larry Lafuse, Liberty
Ben Parsons, Cambridge City
Sarah Smith, Connersville

Each month we randomly select five members to receive a complete home CFL package (while supplies last).

In addition to the drawings each month, the cooperative is giving away free CFL bulbs at the cooperative office in Liberty. There is a limit of six free bulbs per member.

For more information on CFLs and other energy saving ideas go to www.wvremc.com and click on the Touchstone Energy Home Energy Audit link. Hidden account 302503.



Dial 811 Call Before You Dig

Don't forget to call 811 at least two working days before starting any digging or excavating project.



Whitewater Valley REMC 17th Annual Meeting of the Members

Whitewater Valley REMC members heard a report on the status of climate change legislation and an in-depth explanation of the new seasonal rates at the Cooperative's annual meeting held in Richmond on April 6th. President and CEO Boyd Huff said calls and e-mails from cooperative members helped get the attention of our Congressmen and slowed down the passage of legislation that would have had a significant increase on electric bills.

"Let me begin by saying this is a unique time in the history of our country and the history of our industry," Huff said in a video produced by Hoosier Energy for the cooperative's annual meeting. "The conversation on energy that is going on across the nation at this time will impact our lives for many years to come. I have addressed many of these issues in my monthly column of the Powerlines newsletter. Some of these include climate change legislation, the future of coal, renewable energy, energy efficiency, and cap and trade."

In the video, Huff discussed the Our Energy, Our Future grassroots awareness campaign where more than 1.7 million messages have been sent to Congress. The messages have asked lawmakers to focus on the interconnected issues of making sure we have enough generation to satisfy growing demand, developing new low-emissions technologies, and keeping electric bills affordable when shaping energy and climate change policy. Indiana electric cooperatives and municipal utilities have also formed the Indiana Partnership for Fair & Affordable Energy and by visiting FairPowerNow.org you can sign an on-line petition, contact your elected official and share messages with family and friends. Huff thanked all cooperative members who have participated in these grassroots efforts and encourages others to visit the sites for updates.

Detailed information on the new rate structure was presented by Boyd Huff and Marty Blake from Prime Group after the video. Huff told the audience that electricity, just like any other commodity, whether it is gasoline, or corn, or tickets to a college basketball game, is priced differently at different times of the year, based upon supply and demand. "By knowing when these differences occur, we can be a lot smarter about when to use these commodities and actually save money by being more efficient," Huff stated. "This is why we are moving to a new rate structure that prices electricity differently depending upon whether it is during a peak period or off-peak period. Summer and winter usage will cost more. Spring and fall will cost less. Working together, both members and the cooperative will benefit by lowering the demand at peak periods and thus managing power costs more efficiently."

Huff also recognized employees celebrating service anniversaries. Sandy Cason, Connie Maxel and Garry Sayne were each recognized for twenty years of service. Director Sharon Howell was recognized for ten years of service. Two employees retiring at the end of 2010 were also recognized. Bruce Cowen is in his nineteenth year at the cooperative and John Rowe has worked for the cooperative for forty years.

The floor was open to questions before prizes were given away. Patty Burgess brought the Arts Van and provided activities for the Kid's Program. The meeting was adjourned at 8:30 p.m.

Election Results

The cooperative members elected the following three individuals to three year terms as Board members for the Cooperative:

North District - Jim Doerstler

Central District - Duane Smoker

South District - Gary Stokes

The Cooperative members elected the following three individuals for three year terms on the Nominating Committee:

North District - David Williamson

Central District - Robert Westover

South District - Gary Ruf



Left-Right: Sandy Cason, Margaret Hart, Odell Calihan, Michael Adams and Mary Jo Thomas.

Prize Winners

Grand Prize Winners of the 42" Flat Screen TVs

Michael Adams, Richmond
Margaret Hart, Union City
Odell Calihan, Connersville

2nd Prize \$500 Cash

Duane Eisenhower, Union City

3rd Prize \$250 Cash

Richard Lipscomb, Liberty

\$100 Bill Credit

Pat Bowers, Centerville
Theresa Thackery, Centerville
Zee Holbrook, Laurel
Dean Bunce, Losantville
Eastern Indiana Beagle Club, Centerville

\$50 Bill Credit

Willis Murray, Cambridge City
Robert Brown Jr., Richmond
Ruth Frazer, Williamsburg
George Bihl, Richmond
Ronald Wesley, Economy

Kid's Program -Wii Game Console

Chelsey McClish

Keeping Power Flowing

Continued from page 1 ►



Electricity distribution is like a river in reverse. It originates at a single ocean of power—a generation plant—and diverges from there into a series of transmission lines, substations, and smaller feeder lines until it reaches homes and businesses at a trickle of its original strength
 Source: Photo courtesy of USDA NRCS

and neighborhoods and into homes and businesses. Electric cooperatives own and maintain roughly 65,000 miles, or 6 percent, of the nation's transmission lines and 2.5 million miles, or 42 percent, of its distribution lines, according to the Arlington, Va.-based National Rural Electric Cooperative Association. This co-op-maintained

system could cover the distance to the moon and back five times over.

Whitewater Valley REMC alone has its own sizeable distribution system to maintain: our lineworkers stay busy keeping 1,775 miles of line up and running, 24/7.

When there's a problem somewhere on our system, a power outage typically results. Pinpointing the cause of an outage among those thousands of miles of line may seem like trying to find a needle in a haystack, but Whitewater Valley REMC line crews try largely to boil it down to a science.

To understand how co-op staff restores power during an outage, think of electricity distribution like a river in reverse. It originates at a single ocean of power—a generation plant—and diverges from there into a series of transmission lines, substations, and smaller feeder lines until it reaches homes and businesses at a trickle of its original strength. So when we start assessing storm damage, we work to fix the biggest problems first (those starting near the "ocean"), prioritizing repairs according to how they can get the most homes back in service the fastest.

It's a big job, but our line crews are up to the challenge. If there is an outage in your area, you can help crews pinpoint damage by calling us at 800-776-0493. Even if your neighbors have already called, every bit of information we have helps get the river flowing smoothly again.

Scott Gates writes on consumer and cooperative affairs for the National Rural Electric Cooperative Association, the Arlington, Va.-based service arm of the nation's 900-plus consumer-owned, not-for-profit electric cooperatives.

Chelsey Simpson contributed to this article.

Sources: North American Electric Reliability Corporation, National Rural Electric Cooperative Association



Find the Hidden Account Number!

No one found the hidden account number from May. Keep reading your *Powerlines* each month or browsing our website — the next hidden account number could be yours!

June Due Dates

During June the due dates for payment of your electric bills are June 3, 10, 19 and 26.

Remember, we recommend that you allow five business days for the mail to reach the payment processing center. That way, you'll never run the risk of being late.

Payment Options

US Mail: Send your payment to:
Whitewater Valley REMC
P.O. Box 3199
Martinsville, IN 46151-3168

Internet: Log-on at www.wvremc.com

Liberty Office: In person or in the drop box

Automatic Withdrawal: Simply request a form and submit it to our office

FCN or Franklin County National Bank:

In person or in the drop box (Please bring your payment stub with you)

First Merchants Bank both Richmond Locations: In person or in the drop box (Please bring your payment stub with you)

If you would like more information about payment options, call 765-458-5171 or 1-800-529-5557.



Energy Efficiency

Tip of the Month

During summer months when air conditioners work hardest, do energy-intensive tasks such as laundry and dish washing during off-peak energy demand hours, usually in the early morning or later evening.

Source: Alliance to Save Energy