

MAY 2022

POWERLINES

A MONTHLY PUBLICATION FOR THE MEMBERS OF WHITEWATER VALLEY REMC

MESSAGE FROM THE CEO

PRIORITIZE SAFETY YEAR-ROUND AND FOR ALL AGES

PLUG
INTO
SAFETY



ELECTRICAL SAFETY MONTH

Make electrical safety a priority
this month, and every month.



MARY JO THOMAS,
CEO

At WWVREMC, we recognize Electrical Safety Month every May, but we also know the importance of practicing safety year-round. From our co-op crews to you, the members we serve, we recognize that everyone has a part to play in prioritizing safety.

According to the Electrical Safety Foundation International,

thousands of people in the U.S. are critically injured or electrocuted as a result of electrical fires and accidents in their own homes. Many of these accidents are preventable. Electricity is a necessity, and it powers our daily lives. But we know first-hand how dangerous electricity can be because we work with it 365 days a year.

To me, safety is more than a catchphrase. As President and CEO, it's my responsibility to keep co-op employees safe. Additionally, we want to help keep you and all members of our community safe. That's why you'll see WWVREMC hosting safety demonstrations at community events and in schools throughout the year to demonstrate the dangers of electricity. We discuss emergency scenarios, such as what to do in a car accident involving a utility pole and downed power lines. We caution students on the dangers of pad-mounted transformers and overloading circuits with too many electronic devices. Last month, hundreds of local 3rd- and 4th-grade students learned about electrical safety from our linemen at Union County Ag Days. WWVREMC linemen will be hosting a special electric line safety training this month for first responders.

Electricity is an integral part of modern life. Given the prevalence of electrical devices, tools and appliances, I'd like to pass along a few practical electrical safety tips.

Frayed wires pose a serious safety hazard. Power cords can become damaged or frayed from age, heavy use or excessive current flow through the wiring. If cords become frayed or cut, replace them, as they could cause a shock when handled.

Avoid overloading circuits. Circuits can only cope with a limited amount of electricity. Overload happens when you draw more electricity than a circuit can safely handle--by having too many devices running on one circuit.

Label circuit breakers to understand the circuits in your home. Contact a qualified electrician if your home is more than 40 years old and you need to install multiple large appliances that consume large amounts of electricity.

Use extension cords properly. Never plug an extension cord into another extension cord. If you "daisy chain" them together, it could lead to overheating, creating a potential fire hazard. Don't exceed the wattage of the cord. Doing so also creates a risk of overloading the cord and creating a fire hazard. Extension cords should not be used as permanent solutions. If you need additional outlets, contact a licensed electrician to help.

I encourage you to talk with your kids about playing it safe and smart around electricity. Help them be aware of overhead power lines near where they play outdoors. Young WWVREMC members can complete the Energy Explorers quiz on page 3, a quick learning activity on electrical safety hazards. Send in their finished page for a chance to win four tickets to the zoo.

Our top priority is providing an uninterrupted energy supply 24/7, 365 days per year. But equally important is keeping our community safe around electricity.

Visit our website wwwremc.com for additional electrical safety tips or contact us if you would like our trained linemen to provide a safety demonstration at your school or upcoming community event.

IN THIS ISSUE

PAGE 2

Safety Tips

PAGE 3

Spot the Electrical Hazard

Win Four Tickets
to the Zoo!

PAGE 4

Welcome, Janet!

Co-op Adding
Smart Technology
to Smart Meters

May Due Dates

The due dates for
payment of electric bills
are **May 19** and **26**.



wwwremc.com



Ready for more safety tips?

While May is National Electrical Safety Month, it's also the perfect time to prepare for spring and summer storms. Review these safety tips and resources with the family so everyone stays safe before, during and after the storm.



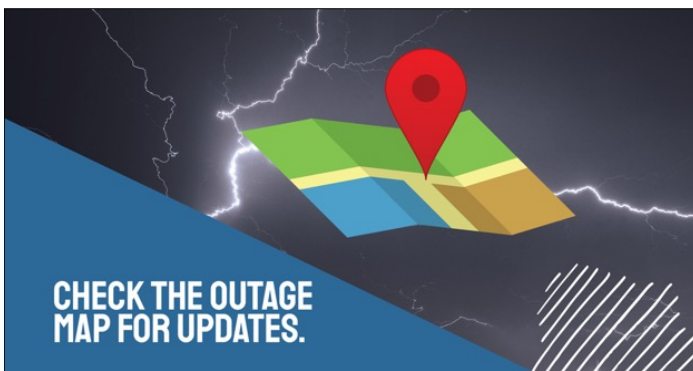
MAKE A PLAN -
FOR THEM.

When severe storms are expected to impact the area, take a few minutes to **make a plan for your family**. In the event of a tornado, shelter in your basement or a centrally-located room without windows, like a hallway or closet.



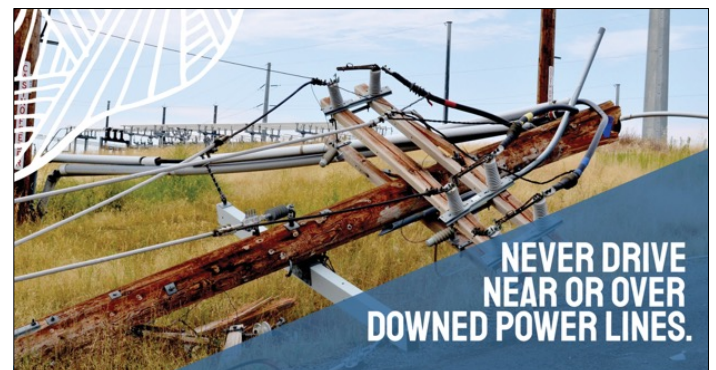
STAY CLEAR OF DOWNED
POWER LINES. NEVER
APPROACH CREWS
WHILE THEY ARE
WORKING.

Always assume the downed power lines are live and dangerous and stay clear until crews can make necessary repairs. If you need to report an outage or service issue, **call 800-776-0493**.



CHECK THE OUTAGE
MAP FOR UPDATES.

If you experience a power outage, remember to **check our outage map at www.remcc.com** for the latest updates.



NEVER DRIVE
NEAR OR OVER
DOWNED POWER LINES.

High winds may bring power lines down. Remember: if you encounter downed lines while driving, **turn around**. Lines may still be energized. Never drive near or over them.



STAY CHARGED.

Make sure your **portable power banks** are ready to go!



GENERATORS BELONG OUTDOORS.

Never operate a generator indoors or in an enclosed space.

SPOT THE ELECTRICAL HAZARD

After you complete this activity, color the items with crayons or colored pencils.

When combined, electricity and common items that seem harmless can create dangerous situations. Look at the items grouped below, then circle the two items that (when combined) create an electrical hazard. **Check your work in the answer key.**

1			
	toaster	fork	bagel
2			
	hairdryer	electrical outlet	running water
3			
	drone	power lines	picnic
4			
	swimming pool	floatie	extension cord

Answer Key: 1) fork & toaster 2) hairdryer & water or outlet & water 3) drone & power lines 4) extension cord & pool

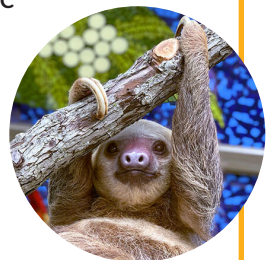
Win Four Tickets to the Zoo!



Young WVVREMC members (ages 6-14) can complete the Energy Explorers activity and send in their finished page for a chance to win four tickets to the zoo. One winner will be randomly drawn from all entries. Send your page by **June 10, 2022**.

Send to:

Whitewater Valley REMC
ATTN: Sandy Cason
P.O. Box 349
Liberty, IN 47353





Each month we hide an account number in the Powerlines. Did you find it?

NO APRIL WINNER

Keep reading your Powerlines each month because the next hidden account number could be yours!

Payment Options

US Mail

Whitewater Valley REMC, P.O. Box 3199
Martinsville, IN 46151-3168

SmartHub

Log-on at wwwremc.com.

Pay-by-Phone

Call 844-827-4759. Set up your PIN. Follow prompts.

Liberty Office

In person or in the drop box.

Automatic Withdrawal

Simply request a form and submit it to our office.

FCN or Franklin County National Bank

In person or in the drop box. Bring payment stub.

VanillaDirect

Visit vanilladirect.com for payment locations and details.



For more information about payment options, please call us:

765-458-5171 or 1-800-529-5557

Welcome, Janet!



WWWREMC welcomed Janet Miller in March as a member support representative. Miller was raised in Fayette County and is a graduate of Connersville High School. Janet's hobbies and interests include music and she is a singer and songwriter. She also enjoys hiking and reading. She has two adult children.

Co-op Adding Smart Technology to Smart Meters

WWWREMC likes to utilize available technology efficiently, which has resulted in implementing a remote disconnect/reconnect meter program. If the service has a remote meter device installed, power may be restored or disconnected from the WWWREMC office. This technology allows us to be more efficient in our time management with less truck rolls to meter locations for power restoration or disconnection by a WWWREMC serviceman. The WWWREMC member is not required to be at the location, which means fewer interruptions in their schedules to meet WWWREMC personnel on site. The hidden account number is 1333200. At this time, not all service locations have a remote meter device, as we have started slowly phasing them in. If you have any questions or concerns regarding remote meter devices, please give us a call.



Helpful Information

Liberty Office Hours

7:30 a.m. to 4:30 p.m. Monday through Friday

CLOSED SATURDAYS, SUNDAYS AND HOLIDAYS.

To Report an Outage or Emergency

Call 1-800-776-0493, 24 hours a day, 7 days a week. Login to your SmartHub account and report your outage.

Be ready to provide the following information:

- The name and account number under which your electric service is listed.
- Map location number.
- Your phone number - needed to call back or confirm power restoration.
- The type of problem you are experiencing - flickering lights, complete power outage, etc.



Office Closed

WWWREMC will be closed Monday, May 30 to honor all those who have served our country.

May
30



101 Brownsville Avenue, P.O. Box 349, Liberty, IN 47353
765-458-5171 • 1-800-529-5557

wwwremc.com • info@wwwremc.com

President & CEO - Mary Jo Thomas • Powerlines Editor - Sandy Cason