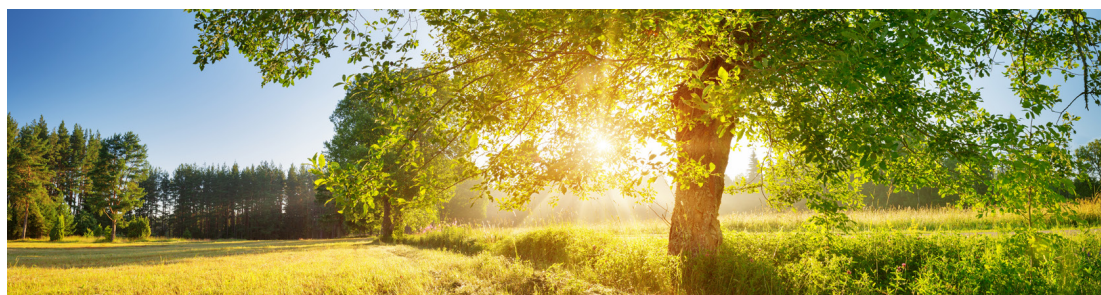




# POWERLINES

A MONTHLY PUBLICATION FOR THE MEMBERS OF WHITEWATER VALLEY REMC

    [www.vremc.com](http://www.vremc.com)



## MESSAGE FROM THE CEO

### A Balanced Fuel Mix Promotes Power



MARY JO THOMAS,  
CEO

As I've noted before in my past columns, the energy industry is undergoing a dramatic transformation as consumer demand for more renewable energy sources grows, and innovation and technology continue to advance exponentially. You're likely witnessing this energy

evolution first-hand.

In driving across the region, you may have noticed fields of solar panels owned by WWVREMC and other utilities, along with an increase in solar panels on your neighbors' roofs. Maybe you've heard about the impending changes in the transportation sector with most major vehicle companies announcing plans to offer more electric vehicles at more affordable prices.

Consumer interest in renewable energy is strong and growing. In addition, national studies indicate that consumers have an expectation that companies operate in an ethical and responsible manner--including when it comes to the environment.

At WWVREMC, we have always put the good of our community first. While our primary function is to provide reliable and affordable energy to our members, we are more than an electricity provider. Because we are a co-op, our mission is to enrich the lives of our members and to serve the long-term interests of our community. We feel we're doing both by investing in renewable energy sources.

Green energy is certainly not new. Solar, wind and hydro power have been around for decades. However, the recent innovations and advances in renewable technology have led to sharp decreases in cost,

making it more feasible and accessible. In recent years, WWVREMC has been able to adjust our fuel mix by utilizing more renewables. Today, nearly 7% of our delivered energy is comprised of renewable energy sources, the majority of which is wind. Our goal is 10% renewables by 2025.

However, to borrow a nautical analogy, it takes a long time to turn the direction of a large ship--and changing the energy mix we use to power homes and businesses doesn't happen overnight. While renewable energy use is increasing, we will still depend on traditional forms of energy to keep power flowing reliably to your home. After all, solar and wind energy are referred to as "intermittent" power since the sun does not always shine and the wind does not always blow. This fact coupled with the growing demand for renewables creates its own challenges. That's why there is real value in maintaining a balanced mixture of fuel types to ensure reliability, resiliency and meet the growing demand for electricity.

As the energy industry continues to evolve, WWVREMC is striving to take advantage of technology advances and market opportunities as they become available. The hidden account number is 1082900. This means WWVREMC can leverage the flexibility of the grid to offer a wider range of renewable power selections as we continue to bring safe, reliable and affordable power to our community.

Albert Einstein once observed that, "Life is like riding a bicycle. To keep your balance, you must keep moving." In order for WWVREMC to meet the growing demand for renewable energy and ensure the reliability of our power supply, we must constantly make operational adjustments as we strive for balance and a brighter future for our members.



**PAGE 2** Consumer requests bring cooperative solar initiative to light



**PAGE 3** Operation Round Up News



**PAGE 4** Website Update  
Unclaimed Capital Credits Search



## July Due Dates

The due dates for payment of electric bills are **July 19** and **26**.



## CONSUMER REQUESTS BRING COOPERATIVE SOLAR INITIATIVE TO LIGHT

MY CO-OP. MY SOLAR. NO  
PROBLEM.

One of the perks of being a member of WWVREMC is having your voice heard. We've been seeing more interest from you about generating your own energy.

The My Solar program was developed to give you direct access to solar energy right in your area. This program will be in place for the foreseeable future as renewable energy continues to grow in Indiana.

Living in this area can be troublesome when looking at solar energy for a home or business. Trees, permits, financing and roof issues have all been road blocks. My Solar clears those blocks.

This program allows any member to use solar energy within their home or business without installing or maintaining a private solar structure. Member participants are able to share in the output from the 10 solar arrays located around southern Indiana. The power generated at the solar arrays is transported from the solar arrays, through the poles and wires WWVREMC has already built and maintains. Nothing new needs to be attached.

The My Solar program offers members the opportunity to purchase one to 12 shares of the cooperative solar project. One share is equivalent to the energy from one solar panel. The size of the panels varies between the 10 solar sites, but averages ~330 Watts. In one year, one share will produce ~450 – 500 kWh. Each participant is limited to 12 panels – approximately three kW.

The My Solar program will work for any property, home or business. WWVREMC is excited to offer this great opportunity that allows members to decide where their energy comes from.

For more information on this program, please visit [wwwremc.com](http://wwwremc.com) or give us a call.

WHITEWATER VALLEY REMC'S  
CHARITY GOLF TOURNAMENT  
TO SUPPORT THE SHEDDING LIGHT ON HUNGER PROGRAM



GOLF  
TOURNAMENT

JULY  
24<sup>th</sup>

Entry Fee Includes

- Cart and green fees
- Lunch
- Skins game entry

Liberty Country Club

1391 US-27, Liberty, Indiana

12:30 - 1:30 p.m. - Fish Fry

1:30 p.m. - Shotgun Start

Events During Play

- Closest to Pin
- Longest Drive
- Chipping Contest

\$220 PER FOURSOME

All proceeds benefit Whitewater Valley REMC's Shedding Light on Hunger program.

REGISTRATION FORM

NAME

PHONE (  )

NAME

PHONE (  )

NAME

PHONE (  )

NAME

PHONE (  )

TOTAL AMOUNT INCLUDED \$

MAKE CHECKS PAYABLE TO WHITEWATER VALLEY REMC

REGISTER  
BY JULY  
18<sup>th</sup>

NEED ADDITIONAL INFO?

Contact WWVREMC at 800-529-5557 or email [info@wwwremc.com](mailto:info@wwwremc.com)

RETURN REGISTRATION FORM TO:  
Whitewater Valley REMC  
P.O. Box 349  
Liberty, IN 47353

Include payment via check or pay on the day of the event with cash, check or credit card.

2 | POWERLINES JULY 2021





## OPERATION ROUND UP®: A FEW CENTS CAN MAKE A BIG IMPACT

Can donating a few pennies a month to help others really make an impact?

They can when those pennies are combined with similar donations from other electric cooperative members.

That is the whole premise behind Operation Round Up. Through the aptly named program, those who receive their electric service from WVVREMC can “round up” their monthly bill to the nearest dollar. So, if your bill is \$92.52, it will be rounded up to \$93 with 48 cents deposited into the ORU fund. The average yearly contribution (a 50-cent contribution per month) is \$6. The maximum you’d contribute is just \$11.88 a year -- or 99 cents a month. Your contribution is tax-deductible.

It’s hard to believe such small donations could affect big change. Through ORU donations from you and other cooperative members are collected and placed in a trust. Non-profit organizations right in your community — like senior citizen programs, volunteer fire departments, and other programs benefitting those in need — can apply for grants through ORU. A volunteer board of trustees reviews the applications and chooses which programs ORU can help during that funding cycle.

“Operation Round Up’s mission to make a positive difference in our community fits in perfectly with WVVREMC’s role,” Sandy Cason, Director of Member Services and Corporate Relations said. “We’re happy we can offer this option to help our members help others.”

Participation in ORU is voluntary, and members can join or drop out of the program at any time. Contact us or visit [www.wvremc.com](http://www.wvremc.com) for more information.



The WVVREMC Community Trust, Inc. trustees, through the Operation Round Up® program, disbursed \$14,319 to 22 organizations in the WVVREMC service area for the first half of 2021.

The next deadline for ORU applications is October. Applications are available online at [www.wvremc.com](http://www.wvremc.com). WVVREMC Community Trust, Inc. trustees are Craig Hale, Sara Jane Moyer and Gary Stokes.

### THE FOLLOWING LOCAL ORGANIZATIONS RECEIVED GRANTS:

**Achieva Resources** | Towards the expense of updating assessment screening software | **\$1,000**

**Birth to Five** | Radio education series for expectant and new parents | **\$500**

**Bear Creek District - Boy Scouts of America** | To offset the costs of registration, uniforms and summer camp for youth interested in scouting | **\$500**

**Brighter Path** | To help fund equine therapy program | **\$500**

**Centerville UMC Monthly Food Ministry** | Towards the purchase of a new freezer | **\$669**

**Everton Volunteer Fire Department, Inc.** | Towards the purchase of two mobile radios | **\$900**

**Family Earth Day Celebration** | To help fund Family Earth Day activities | **\$500**

**Franklin County Humane Society** | Towards the expense of a new roof | **\$500**

**Hagerstown High School** | Funds will assist in providing graduation celebration for students in need | **\$500**

**Hagerstown Optimist Youth Football** | Towards the purchase of new jerseys | **\$500**

**Hope Center** | Funds will assist in providing medical supplies for clients | **\$500**

**Imagination Library of Franklin County Program** | Expenses for preschoolers | **\$500**

**Metamora Volunteer Fire Department** | Towards the purchase of water rescue equipment | **\$500**

**Mt. Carmel Elementary School Library** | To purchase supplies to expand audiobook collection | **\$500**

**Play in the Park** | Towards the purchase of outside summer game supplies | **\$500**

**Randolph Southern Kindergarten** | To help fund Cooking with K program | **\$500**

**Safe Passage** | Towards expenses for special events | **\$750**

**St. Michael School** | Towards the expense of new playground equipment | **\$2,500**

**Town of Lynn Fire Department** | Towards the expense to purchase battery powered hand tools | **\$500**

**Wayne County Cardinal Greenway** | Towards the expense to build a covered shelter at Newman Road trailhead | **\$500**

**Wayne County Railroad Association Corp.** | Towards the expense to build a pavilion and access ramp to caboose at Maplewood Park | **\$500**

**Whitewater Career Center** | Towards the purchase of four portable canister dust collectors for the Construction Technology program | **\$500**



Each month we hide an account number in the Powerlines. Did you find it?

## NO JUNE WINNER

Keep reading your Powerlines each month because the next hidden account number could be yours!

OUTAGES: 1-800-776-0493 CONTACT: 765-458-5171



CONTACT US

ONLINE BILL PAY

OUTAGE MAP



Latest

Join us July 24 for the 2021 SLOH Charity Golf Outing.

3 of 3

Home About Us Your Account Community Energy Efficiency Contact Us Outage Center 2021 Annual Meeting

### UNCLAIMED CAPITAL CREDITS

Do we owe you money? Most refunds are returned to the cooperative because we do not have a current mailing address or contact information for the former member. To see if you are on the list of unclaimed capital credits, simply enter your name and search our records for all unclaimed capital credits. If your name is on the list, complete the form and submit it to the WVVREMC office.

Please remember that as you move off Whitewater Valley REMC's line, you should keep the business office informed of your current address.

Enter name or address to search:

Search

### NEW WEBSITE FEATURE HIGHLIGHT

## Unclaimed Capital Credits Search

Visitors to our new website can now search the most up-to-date list of unclaimed capital credits. With an automated upload of unclaimed capital credits, members can search and start the claim process using an online form. Want to see if the co-op owes you money from unclaimed capital credits? Search unclaimed capital credits at Unclaimed Capital Credits | Whitewater Valley Rural Electric Membership Corporation ([www.vremc.com](http://www.vremc.com)).

## Payment Options

### US Mail

Whitewater Valley REMC, P.O. Box 3199, Martinsville, IN 46151-3168

### SmartHub

Log-on at [www.vremc.com](http://www.vremc.com).

### Pay-by-Phone

Call 844-827-4759. Set up your PIN. Follow prompts.

### Liberty Office

In person or in the drop box.

### Automatic Withdrawal

Simply request a form and submit it to our office.

### FCN or Franklin County National Bank

In person or in the drop box. (Bring payment stub.)

### VanillaDirect

Visit [vanilladirect.com](http://vanilladirect.com) for payment locations and details.



For more information about payment options, please call us:

765-458-5171 or 1-800-529-5557

## Bill Credit Winners

Our monthly drawing for five \$20 bill credits from all voting members of the 2021 annual meeting continues. Here are the winners.

### JULY

Douglas Robinson, West Harrison

Ronald Parker, Liberty

Linda Baker, Liberty

Marilyn Huber, West Harrison

Chad R. Gronning, Connersville

## Helpful Information

### Liberty Office Hours

7:30 a.m. to 4:30 p.m. Monday through Friday

CLOSED SATURDAYS, SUNDAYS AND HOLIDAYS.

### To Report an Outage or Emergency

Call 1-800-776-0493, 24 hours a day, 7 days a week. Login to your SmartHub account or sign up for outage texting at [www.vremc.com](http://www.vremc.com).

### Be ready to provide the following information:

- The name and account number under which your electric service is listed.
- Map location number.
- Your phone number - needed to call back or confirm power restoration.
- The type of problem you are experiencing - flickering lights, complete power outage, etc.

Ready for more info?

Visit [www.vremc.com](http://www.vremc.com)



101 Brownsville Avenue, P.O. Box 349, Liberty, IN 47353  
765-458-5171 • 1-800-529-5557

[www.vremc.com](http://www.vremc.com) • [info@www.vremc.com](mailto:info@www.vremc.com)

President & CEO - Mary Jo Thomas • Powerlines Editor - Sandy Cason