



POWERLINES

A MONTHLY PUBLICATION FOR THE MEMBERS OF WHITEWATER VALLEY REMC

IN THIS ISSUE

PAGE 2

Beginner's Guide to the Electric Grid, Continued

Whitewater Valley REMC Scholarship Program

PAGE 3

Preparing for Winter Storms

Save the Date: 2024 Annual Meeting

Cooperative Christmas Festivities

PAGE 4

Bill Credit Winners

Get Your 2024 Calendar

Office Closing

JANUARY DUE DATES

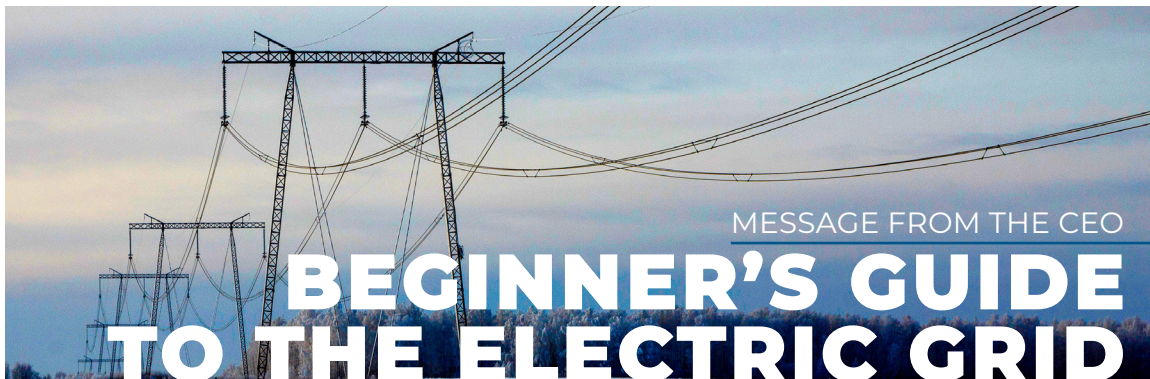
The due dates for payment of electric bills are **January 19 and 26.**







www.vremc.com



MESSAGE FROM THE CEO

BEGINNER'S GUIDE TO THE ELECTRIC GRID



MARY JO THOMAS
CEO

Electricity plays an essential role in everyday life. It powers our homes, offices, hospitals and schools. We depend on it to keep us warm in the winter (and cool in the summer), charge our phones and binge our favorite TV shows. If the power goes out, even briefly, our lives can be disrupted. The system that delivers your electricity is often described as the most complex machine in the world, and it's known as the electric grid.

What makes it so complex? We all use different amounts of electricity throughout the day, so electricity supply and demand constantly change. For example, we typically use more electricity in the mornings when we start our day, and in the evenings when we cook dinner and use appliances. Severe weather and other factors also impact how much electricity we need.

The challenge for electric providers is to plan for, produce and purchase enough electricity so it's available exactly when we need it. Too much or too little electricity in one place can cause problems. So, to make sure the whole system stays balanced, the electric grid must adjust in real time to changes and unforeseen events.

At its core, the electric grid is a network of power lines, transformers, substations and other infrastructure that span the entire country. But it's not just a singular system. It's divided into

three major interconnected grids: the Eastern Interconnection, the Western Interconnection and the Electric Reliability Council of Texas. These grids operate independently but are linked to allow electricity to be transferred between regions when backup support is required.

Within the three regions, seven balancing authorities known as independent system operators (ISOs) or regional transmission organizations (RTOs) monitor the grid, signaling to power plants when more electricity is needed to maintain a balanced electrical flow. ISOs and RTOs are like traffic controllers for electricity.

The journey of electricity begins at power plants. Power plants can be thought of as factories that make electricity using various energy sources, like natural gas, solar, wind and nuclear energy. Across the U.S., more than 11,000 power plants deliver electricity to the grid.

WWVREMC receives power from our generation and transmission (G&T) co-op, Hoosier Energy. We work closely with Hoosier Energy to provide electricity at the lowest cost possible. Being part of a G&T benefits members like you by placing ownership and control in the hands of your co-op, prioritizing affordability and reliability, supporting local economic development and fostering a sense of community.

We need a transportation system to get the electricity from power plants to you. High-voltage transmission lines act as the highways for electricity,

continued on page 2

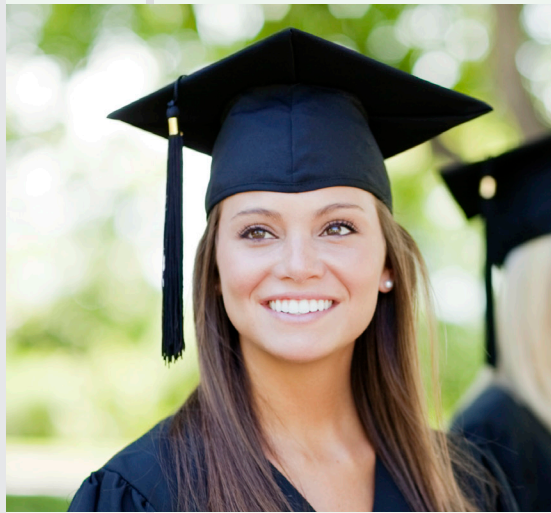
continued from page 1

transporting power over long distances. Massive towers support these lines and travel through vast landscapes, connecting power plants to electric substations.

Substations are like pit stops along the highway, where the electricity voltage is adjusted. They play a crucial role in managing power flow and ensuring electricity is safe for use in homes and businesses. The hidden account number is 435518.

Once the electricity is reduced to the proper voltage, it travels through distribution power lines, like the ones you typically see on the side of the road. Distribution lines carry electricity from substations to homes, schools and businesses. Distribution transformers, which look like metal buckets on the tops of power poles or large green boxes on the ground, further reduce the voltage to levels suitable for household appliances and electronic devices. After traveling through transformers, electricity reaches you — to power everyday life.

We're proud to be your local, trusted energy provider. From the time it's created to the time it's used, electricity travels great distances to be available at the flip of a switch. That's what makes the electric grid our nation's most complex machine — and one of our nation's greatest achievements.



WHITEWATER
VALLEY REMC

SCHOLARSHIP PROGRAM

2024

Are you a member or a dependent of a member of Whitewater Valley REMC looking for financial aid to further your education? We are here to help! **Our scholarship program offers a \$750 scholarship to each of ten eligible applicants to help fund their educational pursuits.**

Education is a powerful tool that can transform lives and communities, and we are committed to supporting your efforts to develop your skills and continue learning. We encourage all eligible members and dependents to take advantage of this opportunity to invest in their future and pursue their dreams.

Qualified applicants will be entered into a drawing, and winners will be announced at the April annual meeting. Scholarship funds will be dispersed to the school for those drawn upon proof of enrollment to the college or trade school they have chosen. Please submit your application to the WWVREMC office by March 8, 2024, at 4:30 p.m.

Visit wwwremc.com/scholarships to learn more and apply.

NEW FACILITY UPDATE

We are excited to share an update on our new facility. Here is a look at the progress. Be on the lookout for more updates as construction continues toward completion.



AUG. 2023



SEPT. 2023



OCT. 2023



NOV. 2023



PREPARING FOR WINTER STORMS

PLUG INTO
SAFETY

WHEN WINTER STORMS STRIKE, POWER OUTAGES CAN HAPPEN. PREPARE FOR WINTER STORMS BEFORE THEY HIT.

Keep a storm preparedness kit fully stocked. This should include bottled water, non-perishable food, emergency blankets, first aid kit/medicine, flashlight, battery-operated or hand-crank radio, extra batteries and toiletries.

If the lights go out, keep warm air in and cool air out by not opening doors to unused rooms. Do not open doors to the outdoors unless necessary.

Keep refrigerator and freezer doors closed as much as possible, and eat perishable food first. Stock up on ice so you can keep things in coolers to keep them from going bad. If the refrigerator reaches 40 degrees Fahrenheit, foods can become unsafe to eat.

SAVE — THE — DATE

The 2024
Annual Meeting
will be at
Richmond
Civic Hall on
April 1, 2024.



ABOVE:
Whitewater
Valley REMC
Christmas
display

RIGHT:
Employees
dress up
as part of
the Liberty
Hometown
Christmas
parade.



Cooperative Christmas Festivities

December was a fun month at our cooperative. We enjoyed participating in the Connersville Christmas display at Roberts Park and the Liberty Hometown Christmas parade. It was an excellent opportunity to contribute to our community and showcase our team spirit. These events help us give back to our community, which is part of our Cooperative Principle #7, Concern for Community.

HIDDEN ACCOUNT NUMBER

Each month we hide an account number in the Powerlines. Did you find it?

NO NOVEMBER WINNER

Keep reading your Powerlines each month. The next hidden account number could be yours!

PAYMENT OPTIONS

U.S. Mail

Whitewater Valley REMC, P.O. Box 350
Liberty, IN 47353

SmartHub

Log on at www.vremc.com.

Pay-by-Phone

Call 844-827-4759. Set up your PIN. Follow prompts.

Liberty Office

In person or in the drop box.

Automatic Withdrawal

Simply request a form and submit it to our office.

FCN or Franklin County National Bank

In person or in the drop box. Bring payment stub.

VanillaDirect

Visit vanilladirect.com for payment locations and details.

For more information about
payment options, please call us:
765-458-5171 or 1-800-529-5557



HELPFUL INFORMATION

Liberty Office Hours

7:30 a.m. to 4:30 p.m. Monday through Friday
CLOSED SATURDAYS, SUNDAYS AND HOLIDAYS

To Report an Outage or Emergency

Call 1-800-776-0493, 24 hours a day, 7 days a week.
Log in to your SmartHub account and report your outage.

BE READY TO PROVIDE THE FOLLOWING INFORMATION:

- The name and account number under which your electric service is listed.
- Map location number.
- Your phone number – needed to call back or confirm power restoration.
- The type of problem you are experiencing – flickering lights, complete power outage, etc.



BILL CREDIT WINNERS

Our monthly drawing for five \$20 bill credits from all voting members of the 2023 annual meeting continues. Here are the winners.

JANUARY

Gary Wooten, Brookville

Kenneth Gray, Hagerstown

Kathleen N. Keller, Brookville

Donald I. Harvey, Greens Fork

Randal J. Kunkel, Brookville

Get your 2024 CALENDAR!

COPIES OF THE
COOPERATIVE
CALENDAR OF
STUDENT ART FOR
2024 ARE HERE!

Stop by our office lobby during regular business hours, Monday through Friday, 7:30 a.m.–4:30 p.m., to pick them up (while supplies last).



Office Closing

Due to an all-employee training day, our office will be closed on Monday, January 15.



101 Brownsville Avenue, P.O. Box 349, Liberty, IN 47353
765-458-5171 • 1-800-529-5557 • www.vremc.com • info@www.vremc.com
President & CEO - Mary Jo Thomas • Powerlines Editor - Jennifer Scott